



	AM	PM
Light Foaming Cleanser.....	✓	✓
Hyaluronic Acid Gel.....	✓	✓
Ceramide Barrier Cream.....	✓	✓
Mineral SPF 50 Sunscreen.....	✓	



	AM	PM
Medi Wash.....	✓	✓
AHA+BHA Peel Pads .....	✓	✓
Ceramide Barrier Cream.....	✓	✓

*Note: Add prescription steroids if there is itchiness as needed.*



	AM	PM
Medi Wash.....	✓	✓
AHA+BHA Peel Pads (2-3x/wk).....	✓	✓
Melafade Serum.....	✓	✓
Retinol + Bakuchiol 0.25 (2-4x/wk)..	✓	✓
Nia-Genic Lotion.....	✓	✓
Mineral SPF 50 Sunscreen.....	✓	

*Note: Use AHA+BHA Peel Pads & Retinol on alternate days.*



	AM	PM
Medi Wash.....	✓	✓
AHA+BHA Peel Pads (2-3x/wk).....	✓	
Melafade Serum.....	✓	✓
Nia-Genic Lotion .....	✓	✓
Mineral SPF 50 Sunscreen.....	✓	

*Note: Replace Nia-Genic with HA gel for oily skin, and Barrier Cream for dry skin.*



	AM	PM
Medi Wash.....	✓	✓
Nia-Genic Lotion .....	✓	✓
Mineral SPF 50 Sunscreen.....	✓	

*Note: Add prescriptions as needed. Use Barrier Cream instead of Nia-genic if dry.*



	AM	PM
Light Foaming or Medi Wash.....	✓	✓
Hyaluronic Acid Gel.....	✓	✓
Nia-Genic Lotion.....	✓	✓
Mineral SPF 50 Sunscreen.....	✓	

*Note: Low dose retinol maybe an option.*



	AM	PM
Light Foaming Cleanser.....	✓	✓
AHA+BHA Peel Pads (2-3x/wk).....	✓	
Retinol+Bakuchiol 0.25 (2-4x/wk).....	✓	
Melafade.....	✓	✓
Antioxidant C Serum +.....	✓	✓
Nia-Genic Lotion.....	✓	✓
Mineral SPF 50 Sunscreen.....	✓	

*Note: Use AHA+BHA Peel Pads & Retinol on alternate days.*



	AM	PM
Light Foaming Cleanser.....	✓	✓
Multi-Peptide Eye Cream.....	✓	✓
AHA+BHA Peel Pads (2-3x/wk).....		✓
Hyaluronic Acid Gel.....	✓	✓
Melafade.....	✓	✓
Retinol+Bakuchiol 0.5 (2-4x/wk).....	✓	✓
Antioxidant C Serum +.....	✓	✓
Neck Renewal Cream.....		✓
Mineral SPF 50 Sunscreen.....	✓	



	AM	PM
Hyaluronic Acid Gel.....	✓	✓
Ceramide Barrier Cream.....	✓	✓



	AM	PM
Medi Wash.....	✓	✓
AHA+BHA Peel Pads .....	✓	✓
Ceramide Barrier Cream.....	✓	✓



	AM	PM
Medi Wash.....	✓	✓
AHA+BHA Peel Pads (2-3x/wk).....	✓	✓
Retinol + Bakuchiol 0.25 (2-4x/wk)..	✓	✓
Nia-Genic Lotion.....	✓	✓



	AM	PM
Medi Wash.....	✓	✓
AHA+BHA Peel Pads (2-3x/wk).....	✓	✓
Nia-Genic Lotion .....	✓	✓



	AM	PM
Medi Wash.....	✓	✓
Nia-Genic Lotion .....	✓	✓
Mineral SPF 50 Sunscreen.....	✓	



	AM	PM
Medi Wash.....	✓	✓
Nia-Genic Lotion.....	✓	✓
Mineral SPF 50 Sunscreen.....	✓	



	AM	PM
AHA+BHA Peel Pads (2-3x/wk).....	✓	✓
Melafade.....	✓	✓
Nia-Genic Lotion.....	✓	✓
Mineral SPF 50 Sunscreen.....	✓	



	AM	PM
Multi-Peptide Eye Cream.....	✓	✓
AHA+BHA Peel Pads (2-3x/wk).....	✓	✓
Hyaluronic Acid Gel.....	✓	✓
Neck Renewal Cream.....	✓	✓

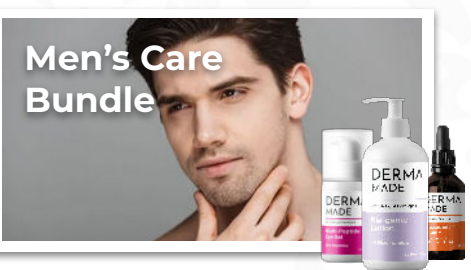
*Note: Use AHA+BHA Peel Pads & Retinol on alternate days.*

**Cosmetic Protocols**

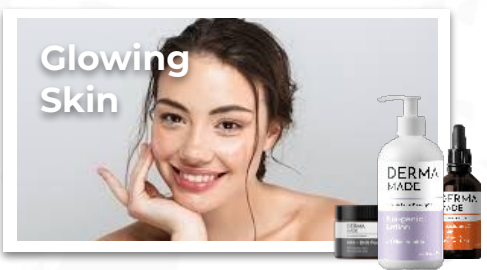
To improve the appearance of the skin



	AM	PM
Melafade Serum.....	✓	✓
Ceramide Barrier Cream.....	✓	✓
Mineral SPF 50 Tinted Sunscreen...	✓	



	AM	PM
Antioxidant C Serum +.....	✓	✓
Multi-Peptide Eye Cream.....	✓	✓
Nia-Genic Lotion.....	✓	✓



	AM	PM
Antioxidant C Serum +.....	✓	✓
AHA+BHA Peel Pads (2-3x/wk).....	✓	✓
Nia-Genic Lotion.....	✓	✓